

产 品 规 格 书

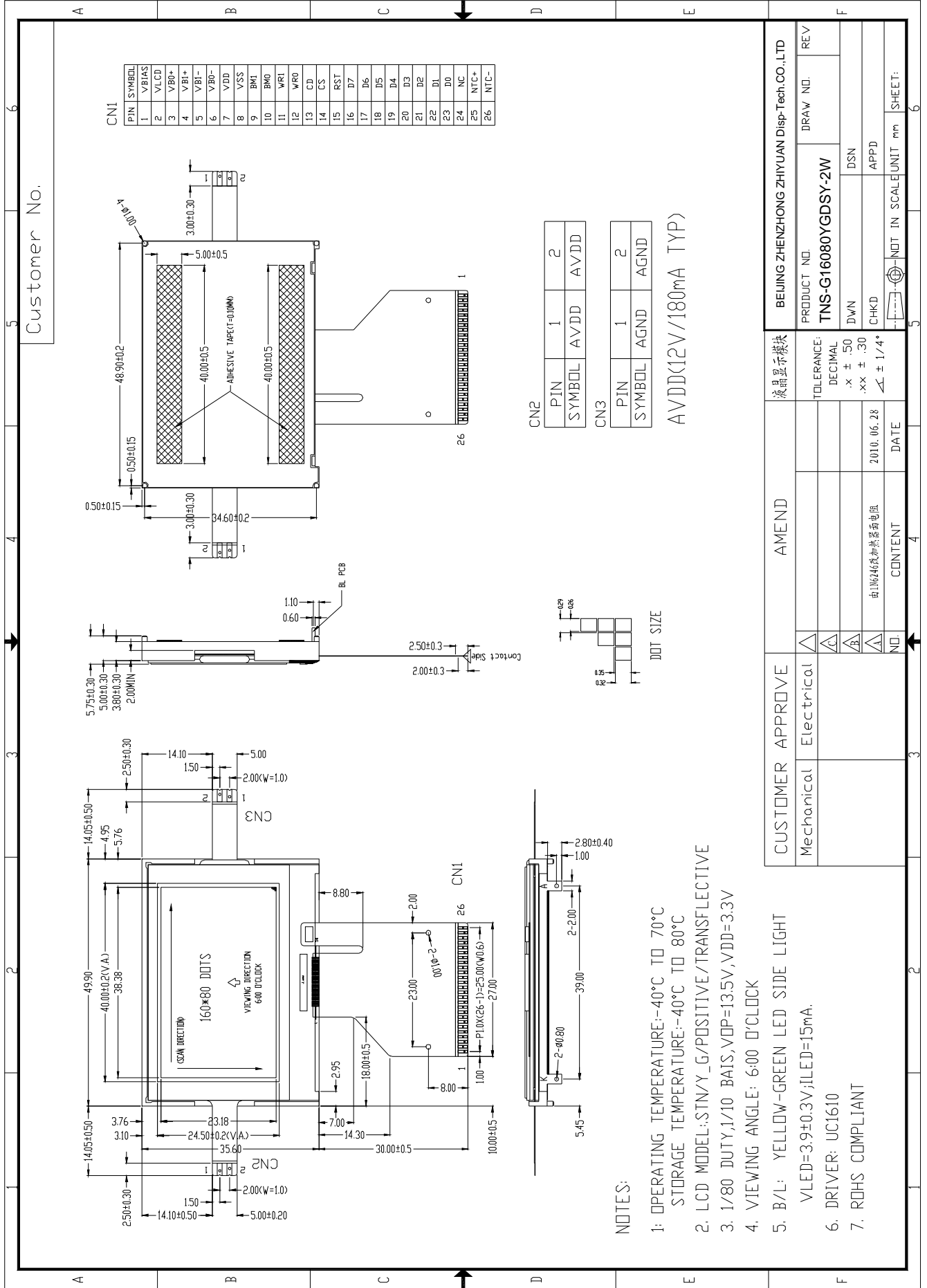
TNS-G16080YGDSY-2W

- 物 理 参 数
- 外 型 尺 寸 图
- 电 气 框 图
- 最 大 绝 对 额 定 值
- 光 电 特 性
- 引 脚 连 接

■ GENERAL INFORMATION

Item of general information	Contents	Unit
LCD type	STN/Y_G/POSITIVE/TRANSFLECTIVE	/
Recommended Viewing Direction	6:00	O' Clock
Module area (W × H×T)	49.90×35.60×5.75	mm ³
Viewing area (W×H)	40.00×32.00	mm ²
Number of Dots	160×80	/
Pixel pitch (W × H)	0.29×0.35	mm ²
Driver IC	UC1610	/
Interface Type	System parallel interface	/
Input voltage	3.3	V
Module Power consumption	80	mw
Backlight Type	LED	/

EXTERNAL DIMENSIONS



■ ABSOLUTE MAXIMUM RATINGS

Parameter of absolute maximum ratings	Symbol	Min	Max	Unit
Supply voltage for logic	VDD	-0.3	+4.0	V
Input voltage	VIN	-0.4	+3.8	V
Operating temperature	Top	-40	70	°C
Storage temperature	TST	-40	80	°C
Humidity	RH	-	90%(Max60 °C)	RH

■ ELECTRICAL CHARACTERISTICS

DC CHARACTERISTICS

Parameter of DC characteristics	Symbol	Min	Typ	Max	Unit
Supply voltage for logic	VDD	1.8	3.3	3.3	V
Input Current	Idd	-	0.62	1.55	mA
Input voltage 'H' level	VIH	2.64	-	-	V
Input voltage 'L' level	VIL	-	-	0.66	V
Output voltage 'H' level	VOH	2.64	-	-	V
Output voltage 'L' level	VOL	-	-	0.66	V

■ BACKLIGHT CHARACTERISTICS

Item of backlight characteristics	Symbol	Min.	Typ.	Max.	Unit	Condition
Forward current	If	10	15	20	V	Vf=5.0V Ta=25°C
Luminance	Lv	15	25	35	cd/m ²	
Number of LED	-	-	2*2	-	Piece	-
Connection mode	P/S	-	Parallel/Serial	-	-	-

Using condition: constant voltage driving method Vf=5.0V.

■ INTERFACE DESCRIPTION

Interface NO.	Symbol	I/O connect to	or Description	When not in use
1	VBIAS	I	The reference voltage to generate the actual SEG driving voltage	-
2	VLCD	POWER	HIGH VOLTAGE LCD POWER SUPPLY	-
3	VB0+	POWER	LCD Bias Voltages.	-
4	VB1+	POWER	LCD Bias Voltages.	-
5	VB1-	POWER	LCD Bias Voltages.	-
6	VB0-	POWER	LCD Bias Voltages.	-
7	VDD	3.3V	Power supply	-
8	VSS	0V	Ground	-
9	BM1	I	BUS MODE	-
10	BM0	I	BUS MODE	-
11	WR1	I	CONTROL THE READ OPERATION OF THE HOST INTERFACE	VSS
12	WR0	I	CONTROL THE WRITE OPERATION OF THE HOST INTERFACE	VSS
13	CD	I	Register select signal	VSS
14	CS	I	Chip select signal	-
15	RST	I	Reset signal	VDD
16	D7	I/O	Data bus	VSS
17	D6	I/O	Data bus	VSS
18	D5	I/O	Data bus	VSS
19	D4	I/O	Data bus	VSS
20	D3	I/O	Data bus	VSS
21	D2	I/O	Data bus	VSS
22	D1	I/O	Data bus	VSS
23	D0	I/O	Data bus	VSS
24	NC	-	No connection	-
25	NTC+	-	Thermistor	-
26	NTC-	-	Thermistor	-

■ REFERENCE APPLICATION CIRCUIT

Please consult our technical department for detail information.